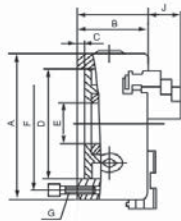




Planspiral-Drehfutter BASIC

Lathe chucks BASIC



Dreibacken-Drehfutter BASIC

Three-jaw lathe chucks BASIC

Zylindrische Aufnahme nach Werksnorm, einteilige Backen
 Centre mount acc. to factory standard, one-piece jaws

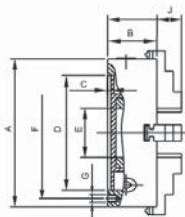
- zentrisch spannend

- self-centering

Guss / Cast iron

A (∅) mm	D mm	F mm	E mm	J mm	B mm	C mm	G mm	Rundlauf / Runout ∅	RPM _{MAX} min ⁻¹	kg	Art.-Nr. / Order no.
80	55	66	16	16,5	50	4	3-M6	0,08	4000	2	● WAT-D80/3-ZGE
100	72	84	22	19,5	55	3	3-M8	0,08	3500	3	● WAT-D100/3-ZGE
125	95	108	30	26,5	58	4	3-M8	0,08	3000	5	● WAT-D125/3-ZGE
160	130	142	45	29	65	5	3-M8	0,08	2500	9	● WAT-D160/3-ZGE
200	165	180	65	34	75	5	3-M10	0,10	2000	16	● WAT-D200/3-ZGE
250	206	226	80	40	80	5	3-M12	0,10	1600	28	● WAT-D250/3-ZGE
315	260	285	100	57,5	90	6	3-M16	0,12	1200	47	● WAT-D315/3-ZGE
400	340	368	130	73,5	100	6	3-M16	0,12	1000	73	● WAT-D400/3-ZGE
500	440	465	210	87	115	6	6-M16	0,16	800	121	● WAT-D500/3-ZGE
630	560	595	260	89,5	131	7	6-M16	0,16	800	200	● WAT-D630/3-ZGE

Inkl. je 1 Satz Dreh- und Bohrbacken, Spannschlüssel, Befestigungsschrauben
 Incl. 1 set each of solid jaws internally / externally stepped, wrench, fixing screws



Vierbacken-Drehfutter BASIC

Four-jaw lathe chucks BASIC

Zylindrische Aufnahme nach Werksnorm, einteilige Backen
 Centre mount acc. to factory standard, one-piece jaws

- zentrisch spannend

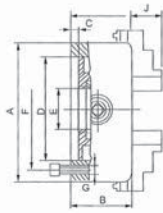
- self-centering

Guss / Cast iron

A (∅) mm	D mm	F mm	E mm	J mm	B mm	C mm	G mm	Rundlauf / Runout ∅	RPM _{MAX} min ⁻¹	kg	Art.-Nr. / Order no.
80	55	66	16	16,5	50	4	3-M6	0,08	4000	2	● WAT-D80/4-ZGE
100	72	84	22	21	53,5	3	3-M8	0,08	3500	3	● WAT-D100/4-ZGE
125	95	108	30	26,5	58	4	3-M8	0,08	3000	5	● WAT-D125/4-ZGE
160	130	142	45	29	65	5	3-M8	0,08	2500	9	● WAT-D160/4-ZGE
200	165	180	65	34	75	5	3-M10	0,10	2000	16	● WAT-D200/4-ZGE
250	206	226	80	40	80	5	3-M12	0,10	1600	28	● WAT-D250/4-ZGE
315	260	285	100	57,5	90	6	3-M16	0,12	1200	47	● WAT-D315/4-ZGE
400	340	368	130	73,5	100	6	3-M16	0,12	1000	85	● WAT-D400/4-ZGE
500	440	465	210	87	115	6	6-M16	0,16	800	119	● WAT-D500/4-ZGE

Inkl. je 1 Satz Dreh- und Bohrbacken, Spannschlüssel, Befestigungsschrauben
 Incl. 1 set each of solid jaws internally / externally stepped, wrench, fixing screws

Planspiral-Drehfutter BASIC
Lathe chucks BASIC



Sechsbacken-Drehfutter BASIC
Six-jaw lathe chucks BASIC

Zylindrische Aufnahme nach Werksnorm, einteilige Backen
Centre mount acc. to factory standard, one-piece jaws

- zentrisch spannend

- self-centering

Guss / Cast iron

A (Ø) mm	D mm	F mm	E mm	J mm	B mm	C mm	G mm	Rundlauf / Runout Ø	RPM _{MAX} min ⁻¹	kg	Art.-Nr. / Order no.
100	72	84	26	19,5	55	3	3-M6	0,08	3500	3	● WAT-D100/6-ZGE
130	100	115	35	28,5	58	5	3-M8	0,08	3000	6	● WAT-D130/6-ZGE
165	130	145	45	29	65	5	3-M8	0,08	2500	9	● WAT-D165/6-ZGE
200	165	180	65	34	75	6	3-M10	0,10	2000	16	● WAT-D200/6-ZGE
252	206	226	80	40	80	6	3-M12	0,10	1600	26	● WAT-D252/6-ZGE

Inkl. je 1 Satz Dreh- und Bohrbacken, Spanschlüssel, Befestigungsschrauben
Incl. 1 set each of solid jaws internally / externally stepped, wrench, fixing screws

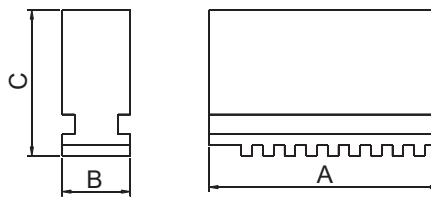
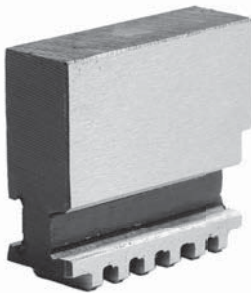
Ersatzbacken auf Anfrage lieferbar
Spare jaws available upon request

Backensätze für Planspiral-Drehfutter BASIC
Jaws for lathe chucks BASIC

Weiche Monoblockbacken für Planspiral-Drehfutter BASIC
Soft solid jaws for lathe chucks BASIC

- Material C45

- material C45



Für / for Ø mm	A mm	B mm	C mm	3-Ba. / 3-Jaw Art.-Nr. / Order no.	4-Ba. / 4-Jaw Art.-Nr. / Order no.
80	32	12	33	● D80/3-MB	● D80/4-MB
100	42	15	38	● D100/3-MB	● D100/4-MB
125	56	16	45	● D125/3-MB	● D125/4-MB
160	70	18,5	54	● D160/3-MB	● D160/4-MB
200	85	22	61	● D200/3-MB	● D200/4-MB
250	105	27	69	● D250/3-MB	● D250/4-MB
315	130	36	91	● D315/3-MB	● D315/4-MB
400	138	36	91	● D400/3-MB	● D400/4-MB

Preis pro Satz / Price per set